



THE UNIVERSITY OF

MELBOURNE

Archives Digitised Collections

Creator(s)

Yura, Shigeru

Title

Sketch "A" South Elevation in Corridor of Japanese Room in University of Melbourne, New School of Architecture

Date

1962-1964

Description

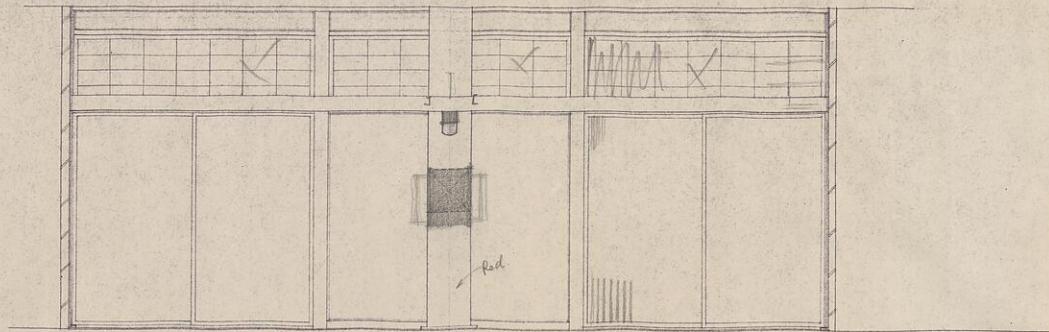
Sub-item: 1976.0012.00015

Terms and Conditions

Copyright owned by University of Melbourne Archives. For information about ordering a copy of this image contact the University of Melbourne Archives: archives@archives.unimelb.edu.au

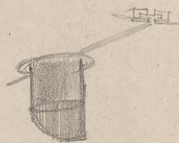
Preferred Citation

University of Melbourne Archives, Yura, Shigeru, Sketch "A" South Elevation in Corridor of Japanese Room in University of Melbourne, New School of Architecture , 1976.0012.00015



- Dump a design
- sliding door.
(KRO SHIN)

sliding
door



UNIVERSITY OF MELBOURNE
NEW SCHOOL OF ARCHITECTURE BUILDING.

JAPANESE ROOM. SKETCH "A"
SOUTH ELEVATION IN CORRIDOR.

JOB NO.

SCALE 1/8" = 1'-0"

DRAWN: S. YUKA

DATE: 30/Dec/64

J/4