



THE UNIVERSITY OF  

---

MELBOURNE

## **Archives Digitised Collections**

### **Creator(s)**

### **Title**

First car trip from Melbourne to Adelaide 1905

### **Date**

1905

### **Description**

Item: 2002.0003.00865

### **Terms and Conditions**

This item is out of copyright. Please acknowledge the University of Melbourne Archives as the source of this material. For information about ordering a copy of this image contact the University of Melbourne Archives: [archives@archives.unimelb.edu.au](mailto:archives@archives.unimelb.edu.au)

### **Preferred Citation**

University of Melbourne Archives, Wilfrid Russell Grimwade and Lady Mabel Grimwade collection, First car trip from Melbourne to Adelaide 1905, 2002.0003.00865



**NATURE  
PRINTS**





1905

May  
June 30<sup>th</sup> Left Melbourne 5.43  
Arr. Tworlake 2.35  
Left " 3.00  
Arr. Hamilton 5.17

June 30<sup>th</sup> Hamilton  
to  
Tut. Gamber T.A. 83 - 7 hrs 46 a

June 1<sup>st</sup> Tut. Gamber  
to  
Kingston 131 miles 5 hrs 50 a

June 2<sup>nd</sup> Kingston  
to "the Coorong" 92 miles in 11 hrs 30 a  
Meningie (actual)  
9 hrs 25 a  
(running)

June 3<sup>rd</sup> Meningie  
to  
Add aide 97 miles 4 hrs 40 a  
604 miles in 36 hrs 26 a

Previous Add aide to bush heard  
27 hrs 16 a

Average 16.5 miles an hour



17 June 31<sup>st</sup> 05

Water on the road between  
Casterton & Shaddockville





May 31<sup>st</sup> 05

Stuck in the sand near Strathdowne





May 31<sup>st</sup> 05

Sand difficulties near Strathdowne





June 2<sup>nd</sup> 03

Away from tracks and roads on the Coorong



Good roads  
near  
Beachport  
L.A.



June 1st '05





June 1st 05

Rain-water on the road between  
Beachport and Robe S.A.





June 2<sup>nd</sup> 15

Lunch on the Coorong





June 2<sup>nd</sup> 05

Caught on a tussock in the Coorong  
Delayed nearly an hour

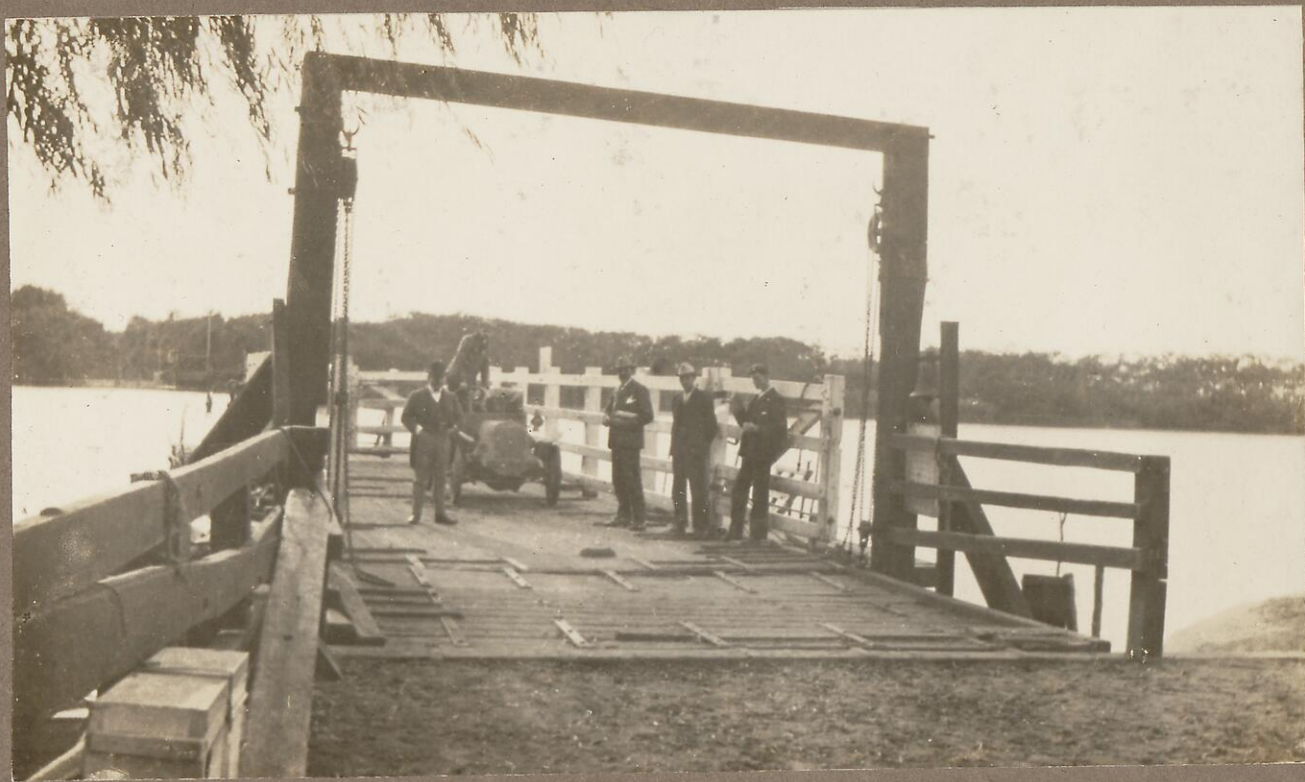




June 3<sup>rd</sup> 05

Crossing the Hauraki on a punt at Wellington





June 3<sup>rd</sup> 05

The Start for the Run into Adelaide





June 15<sup>th</sup> 05

Ballasting the line with ashes





June 15<sup>th</sup> 05

On the way from Wolseley to Harcourt



2002.0003.00321



June 17<sup>th</sup> 1915  
200 Arr. bal in truck home after 1100 miles ground. 11



